

FC STANDARD

1 PC Connector (341/331 Series)

CONNECTOR	FERRULE TYPE	BOOT TYPE	BOOT COLOR
341 Preassembled 1pc	101 SM: 125.5µm	P Standard 3.0mm	1 Blue
331 Unassembled Key Ring	201 MM: 127µm	N Standard 2.0mm	2 Black
332 Unassembled Inner Key		M Standard 900µm	4 Red
		J MINI 900µm	6 Yellow
			8 Beige

341 - 101 - J1 ORDER CODE example

Features:

- SENKO's Standard Connector series gives the highest value for cost
- Pre-assembled one piece design and Connector Kit available
- Meets and exceeds the TIA/EIA, IEC and JIS SC Specification
- Typical IL against master to be 0.12dB Max 0.3dB
- Various boot color to meet customer need
- Crimp tool to be used CRT-401
- Narrow key width 2.00mm+/-0.02mm

900µm Standard Boot

2.0mm Standard Boot

3.0mm Standard Boot

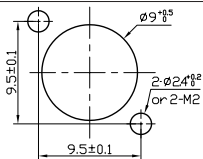


FC ADAPTER

Square (297) and Oval (298)

ADAPTER TYPE	SLEEVE	KEY WIDTH
297 Solid Body	1 Zirconia Straight Split	01 For PC Connector 2.15 +0.05/-0
298 FC Oval Adapter "HD"	2 Metal Straight Split	02 For APC Connector 2.05+/-0.02

297 - 101 ORDER CODE example



Mounting Hole Dimensions

FC Square, Standard Body and Oval Adapter, HD Style

Features:

- FC Square, High Density Oval and Round type available
- UPC type Adapter have Wide key of 2.15mm
- APC type Adapter have Narrow key of 2.05mm
- Typical insertion loss under 0.05dB and Max IL of 0.20dB
- High quality and durable Ni-Plated Brass body

FC Square Adapter, Solid Body

FC Oval Adapter, HD Style

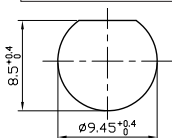


FC ROUND ADAPTER

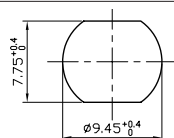
Round (253 type)

CODE	SLEEVE	KEY WIDTH	FLANGE
253 FC Round Adapter "D" & "DD"	1 Zirconia Straight Split	0 For PC Connector 2.15 +0.05/-0	3 D: Ø8.85mm x 7.95mm
	2 Metal Straight Split	2 For APC Connector 2.05 +/- 0.02	4 DD: Ø9.35mm x 7.65mm

253 - 103 ORDER CODE example



FC Round Adapter D Style



FC Round Adapter DD Style

Mounting Hole Dimensions

FC Round Adapter, D Style

